

FUJITSU

CASE STUDY

AIRSTAGE™

25 Washington
Montgomery, AL

Slashing Electric Costs in a 1950's Office Building

Project Name

25 Washington

Location

Montgomery, AL

Completion Date

December 2012

The Team

Owner

The City of
Montgomery, AL

HVAC Contractor

The City of
Montgomery, AL

HVAC Distributor

Wittichen Supply
Company

The offices at 25 Washington were bought by the City of Montgomery from Regions Bank and renovated to house city services. It is a 6 story building built in the 1950's.

Design Challenge

The building had been conditioned with a water cooled chiller and large central AHUs. Heat was provided by electrical strip heat. The system was old and inefficient. When the City purchased the building the electric bills were through the roof and needed a more efficient option for conditioning the building.

Why Fujitsu Was Chosen

Fujitsu's Airstage V-II System was chosen due to the high efficiency and high heat capacity. The City also has a strong relationship with the local Fujitsu Distributor, Wittichen Supply Company.

The Results

Lower energy costs and comfortable tenants. The individual control over the spaces have been a hit with the occupants. And the City has seen a huge return on their investment. Since then They have installed Fujitsu Airstage in the Clubhouse at a City owned Golf Course, and they are looking to install Fujitsu in other City owned facilities.

Airstage Equipment List: Series: V-II

(1) AOUA72RLBV V-II Heat pump
Outdoor Unit

(3) AOUA96RLBV V-II Heat pump
Outdoor Unit

(7) AUUA7RLAV Compact
Cassette Indoor Units

(14) AUUA9RLAV Compact
Cassette Indoor Units

(7) AUUA12RLAV Compact
Cassette Indoor Units

(1) AUUA14RLAV Compact
Cassette Indoor Units

(5) AUUA18RLAV Compact
Cassette Indoor Units

(1) ARUL18RLAV Slim Duct
Indoor Unit (Drain pump internal)

(1) UTY-DCGY Central Remote
Controller

(23) UTY-RSKU Simple Remote
Controllers (With master control)

(34) UTG-CCGV Cassette Grilles

(3) UTR-BP180X Separation Tubes

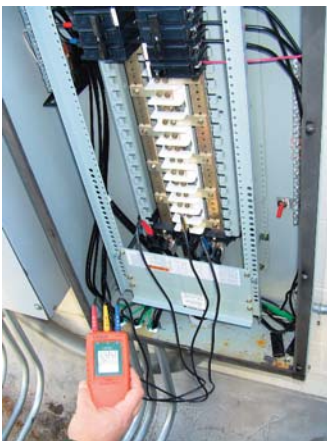
(7) UTR-H0906L Headers

The City of Montgomery services such as 311, 911 and permitting are located in the former Regions Bank Building.

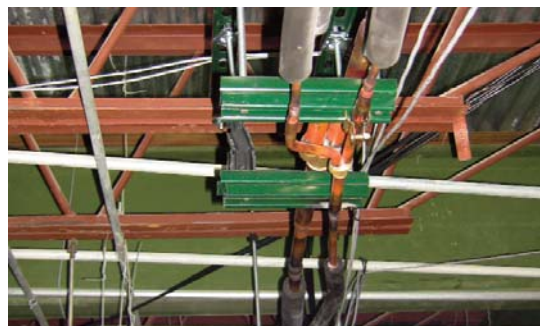




There are 4 systems totaling 30 tons installed on the project.



Ensuring proper electrical supply prior to startup.



Proper piping installation is critical on VRF installations.



With access to all system components on the same side, servicing Fujitsu VRF systems is a breeze.



- ISO9001
- ISO14001

Fujitsu General America, Inc.

353 Route 46 West
Fairfield, NJ 07004
Toll Free: (888) 888-3424
Local: (973) 575-0380

www.airstagevrf.com
www.fujitsugeneral.com
A subsidiary of
Fujitsu General Limited